

# Aluminium Stewardship Initiative (ASI)

Responsible production, sourcing and stewardship

Cameron Jones – Director of Assurance, ASI

*Conference – New Standards of the Aluminium Industry for Sustainable Development, September 2020*

# ASI Antitrust Compliance Policy

---

*Attendees are kindly reminded that the ASI is committed to complying with all relevant antitrust and competition laws and regulations and, to that end, has adopted an Antitrust Policy, compliance with which is a condition of continued ASI participation.*

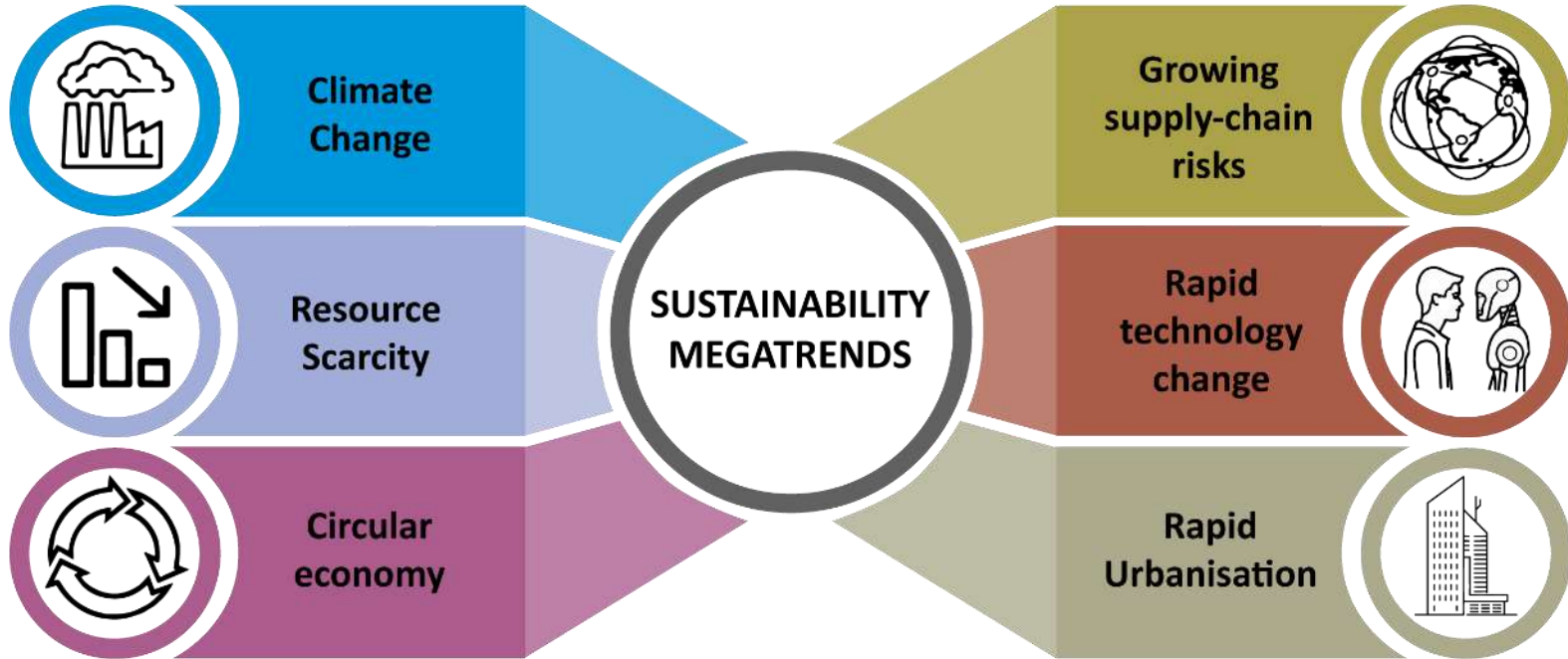
*Failure to abide by these laws can potentially have extremely serious consequences for the ASI and its participants, including heavy fines and, in some jurisdictions, imprisonment for individuals.*

*You are therefore asked to have due regard to this Policy today and indeed in respect of all other ASI activity.*



# Drivers for sustainability

# Sustainability Megatrends



# Build Back Better ...

---

- Business were already grappling with these challenges
- Covid-19 interconnected with these megatrends and amplifying some of them
- Brought a sudden elevation of risks and impacts, and exposure to large changes
- Survival pressure on some sectors e.g. travel
- Some adapting and learning from crisis, which can apply to sustainability challenges
- The ability to invest in new approaches will depend on economic resilience and prioritisation

# ASI THEORY OF CHANGE

## ASI LONG-TERM GOALS



Stakeholders increasingly invest in and/or reward improved practices and responsible sourcing for aluminium.



Sustainability and human rights principles are increasingly embedded in aluminium production, use and recycling.



Aluminium continues to improve its sustainability credentials.

## SHORT-TERM OUTCOMES

## MEDIUM-TERM OUTCOMES

- ASI membership is inclusive
- Increasing uptake of certification by diverse businesses
- Relevant, practical and consistent assurance
- Continual improvement among certified entities
- Enhanced ability to leverage existing certifications

- Reduced climate change impact
- Enhanced waste management of upstream processing residues
- Enhanced biodiversity management
- Practices that implement business' responsibility to respect human rights
- Increased material stewardship by all actors in the aluminium value chain

- ASI is recognised as a valuable initiative
- Society makes effective use of aluminium

## ASI STRATEGIES



EFFECTIVE GOVERNANCE



CREDIBLE PROGRAM



GROWING MEMBERSHIP

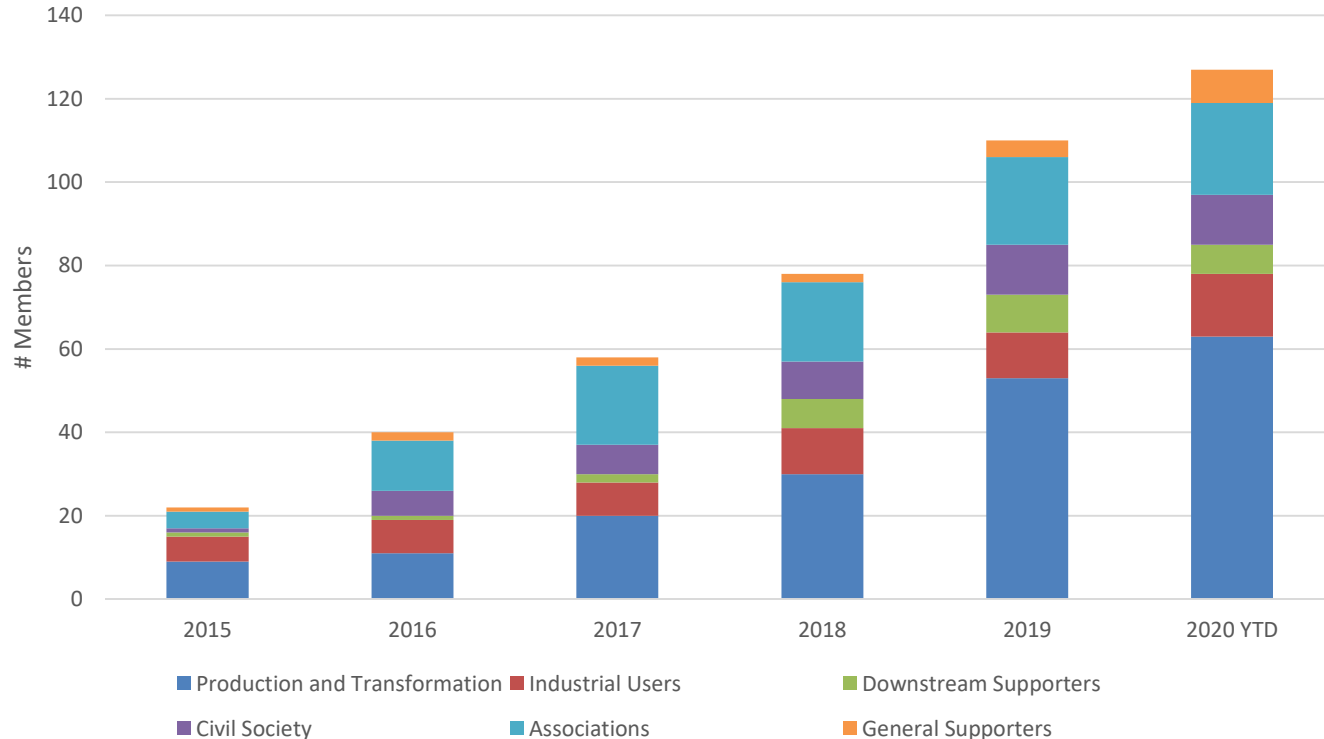


FINANCIAL RESILIENCE

asi Aluminium Stewardship Initiative

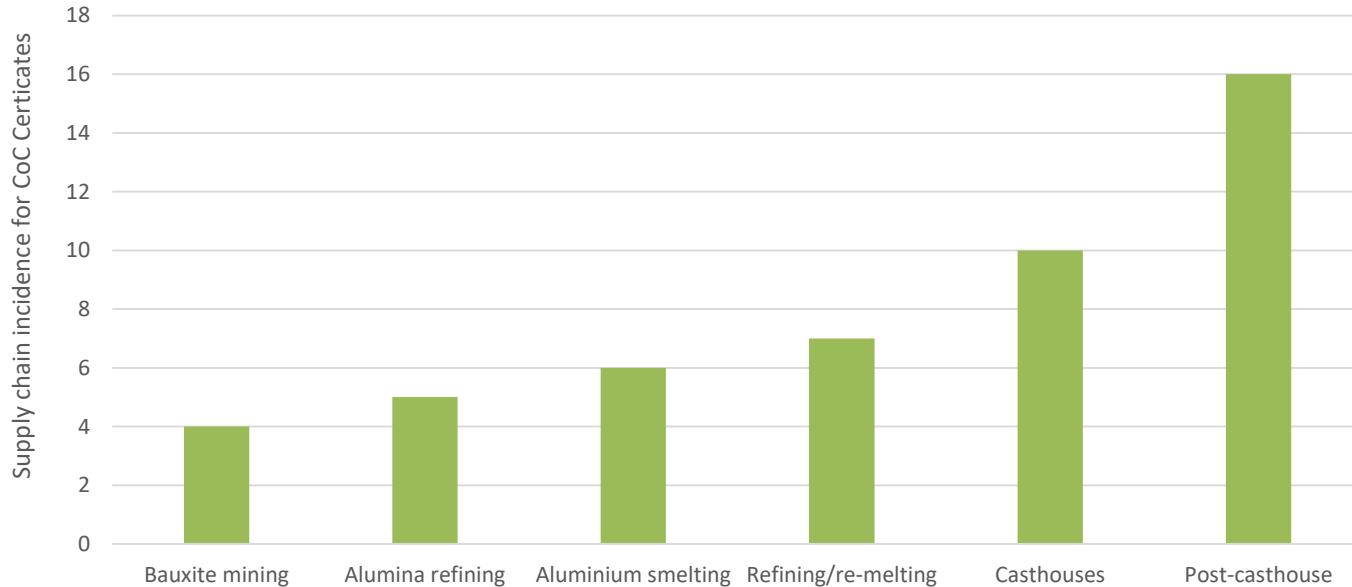
# Diverse and growing membership (data to 29 June 2020)

Membership growth by class and year



# ASI Chain of Custody Certification (data to 29 June 2020)

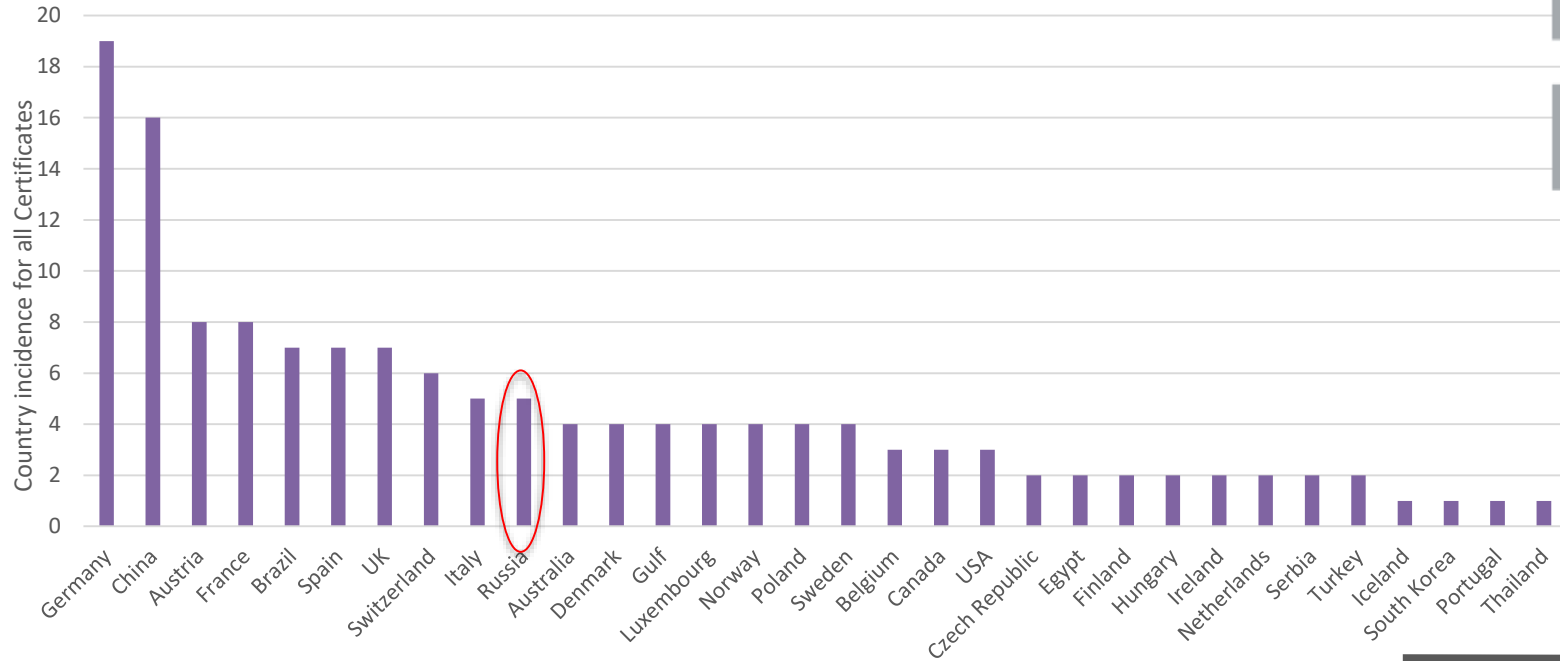
ASI CoC Certifications by inclusion of supply chain activity in Certification Scope





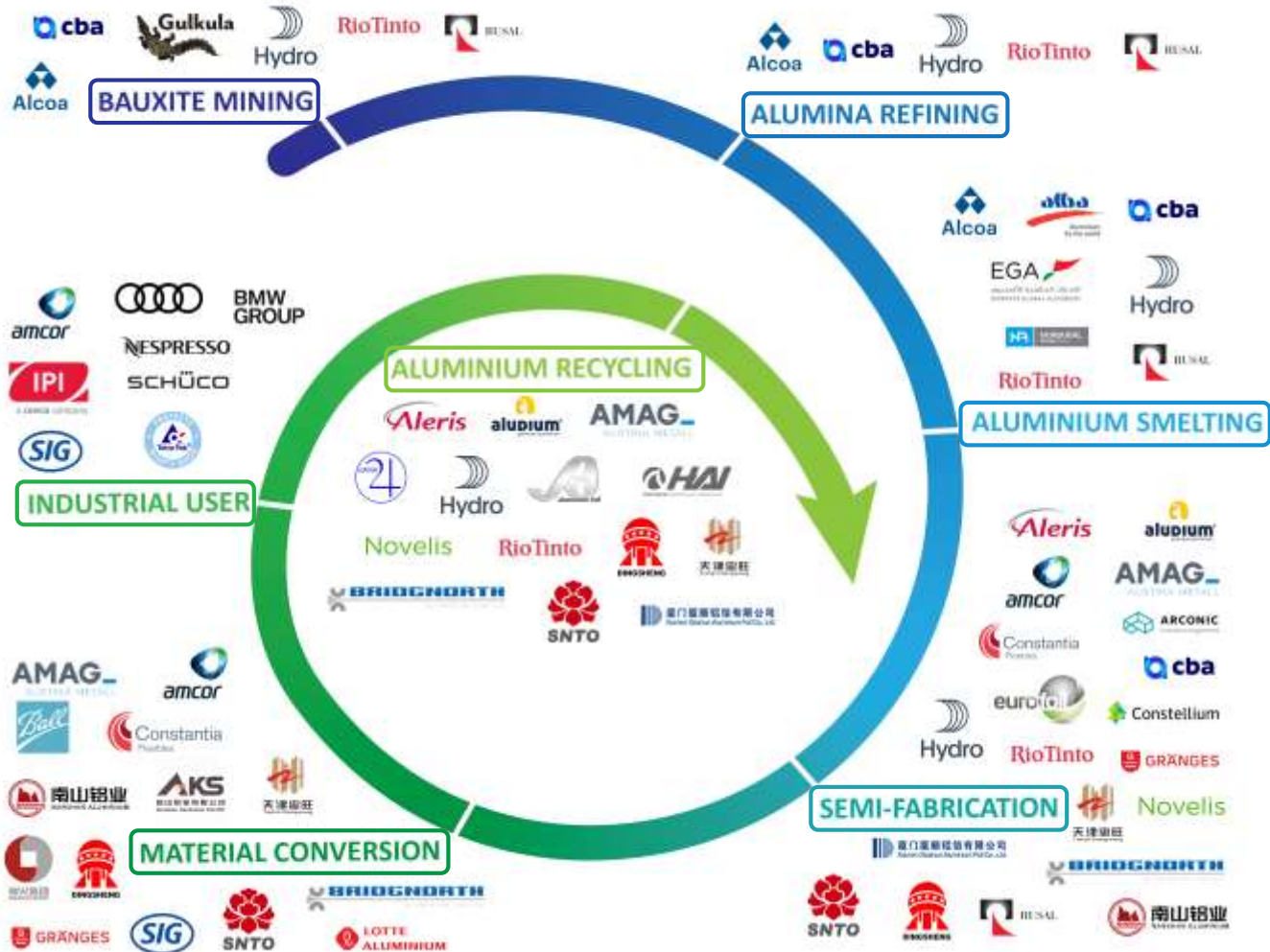
# ASI Certification uptake by country (data to July 2020)

ASI Certifications by countries of operation in Certification Scope



# ASI Certified Members through the aluminium value chain

(June 2020)



# ASI benefits for supply chain engagement

---

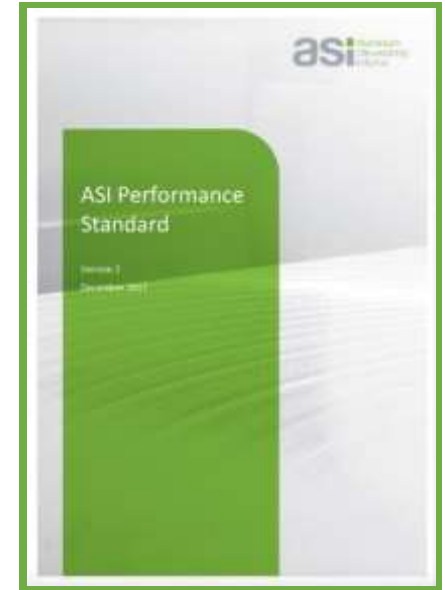
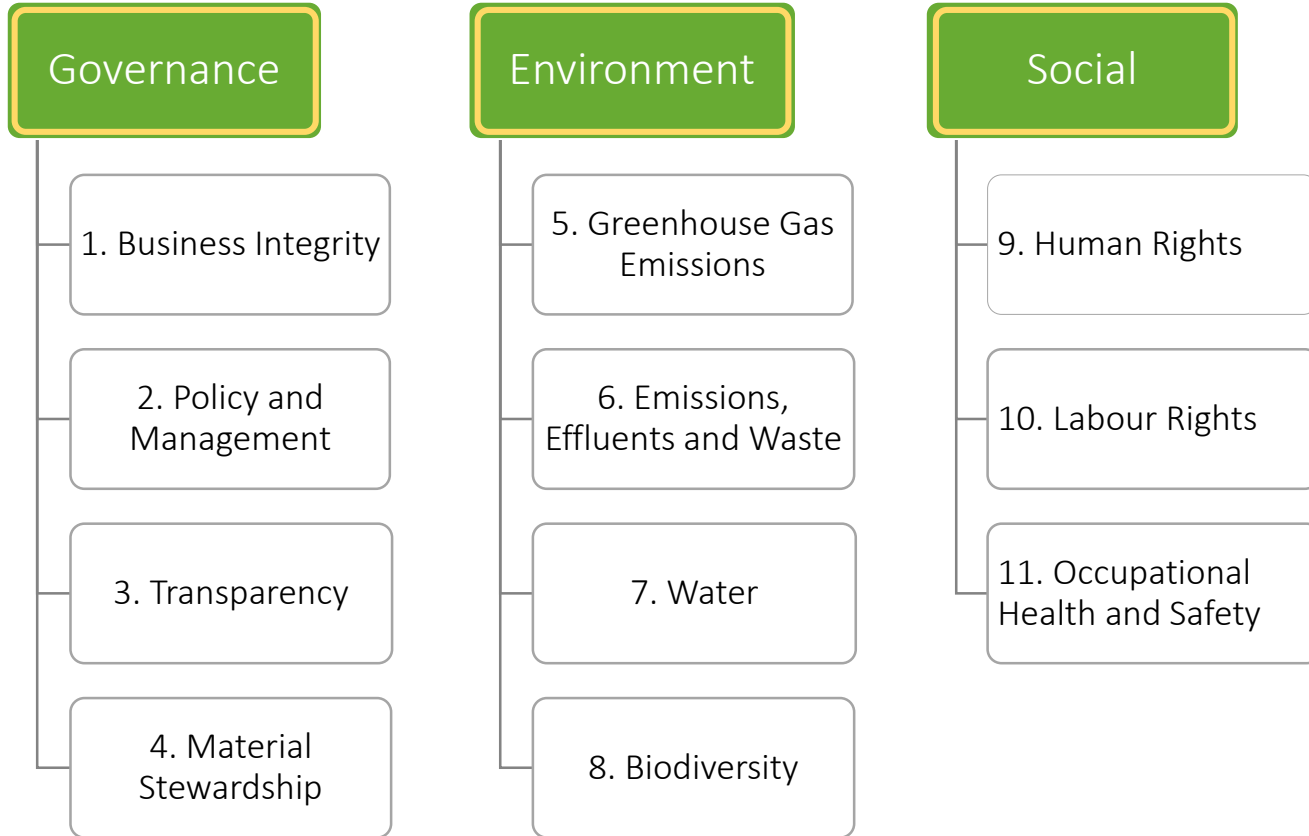
- **Growing stakeholder focus on risks in mineral supply chains back to mines / recycled**
  - International expectations that will only increase in momentum – don't be last
  - How to be proactive and influence your suppliers and customers?
  - How to make the 'circular economy' real?
- **ASI focuses on a wide range of sustainability issues**
  - Can be used to address a wide range of supply chain risks
  - Assurance carried forward through the value chain – reduces duplication
  - Global platform for supplier and customer engagement / management
- **Multi-industry learnings and issues can be shared and actioned**
  - Links across transport, consumer goods, construction, trading etc
  - NGO engagement on environment, governance and social topics

# ASI Standards

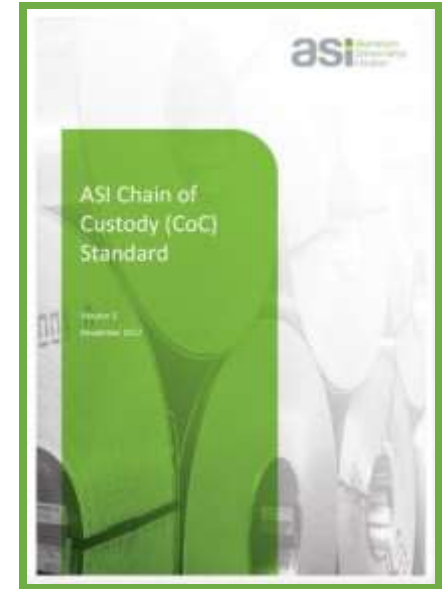
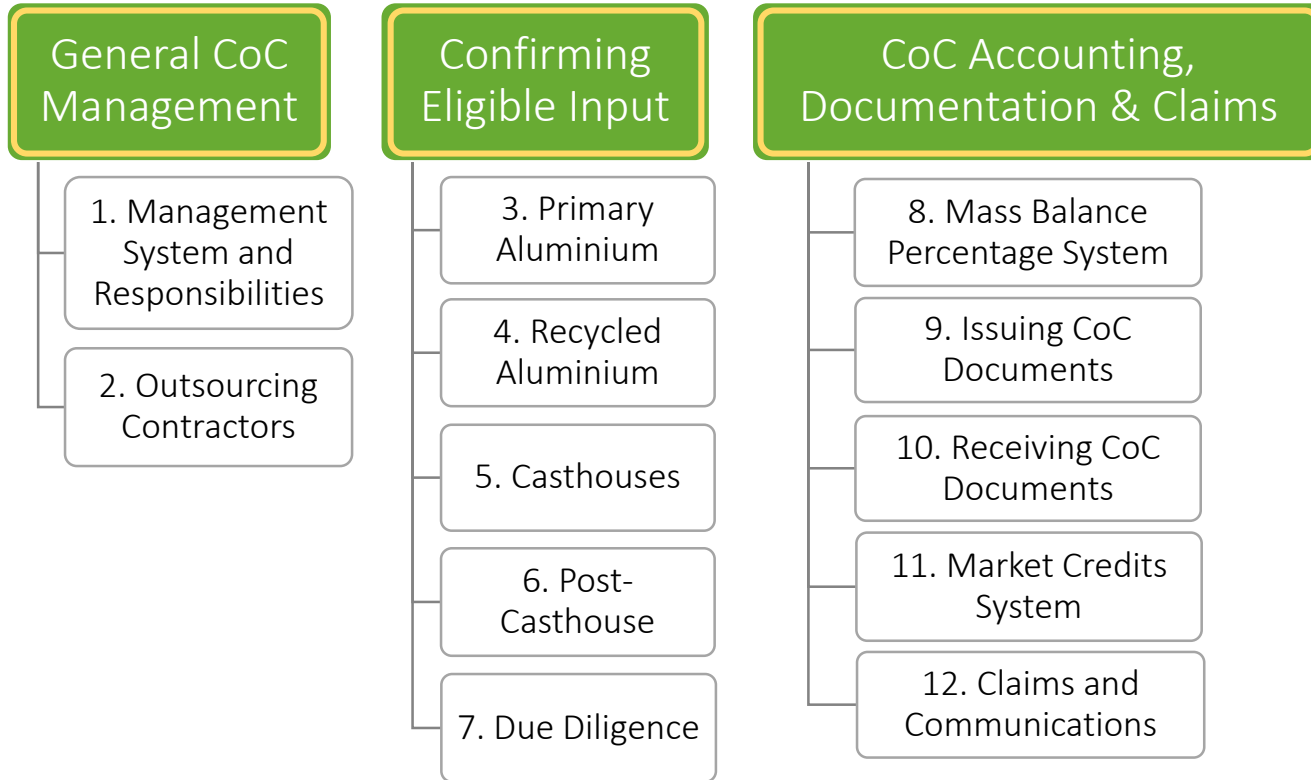
Performance Standard

Chain of Custody Standard

# Performance Standard: Overview



# Chain of Custody Standard: Overview



# Steps to certification

---

- From joining ASI, a Member has 2 years to have at least ONE facility certified to the Performance Standard.
- Certification to the Chain of Custody (CoC) Standard is only available AFTER certification to the Performance Standard.
- Certification to the CoC Standard is OPTIONAL.
- Certification cycle for both Standards is 3 years.
- Certification is only obtained if there are NO MAJOR non-conformances from audit.
- Provisional certification for ONE year is available if <3 MAJOR non-conformances\*.



\* - *subject to approval for next Standards revision.*

# Summary

---

- ASI is a global multi-stakeholder initiative focused on sustainability issues
- Two Standards:
  - Performance Standard
  - Chain of Custody Standard
- We have built a robust program for supply chain engagement and improvement
- Membership and certifications are growing and ASI is building a strong momentum (135 members currently)
- Current and new member commitment has been maintained so far through Covid-19
- **We aim to achieve shared impact through scale, collaboration and implementation.**





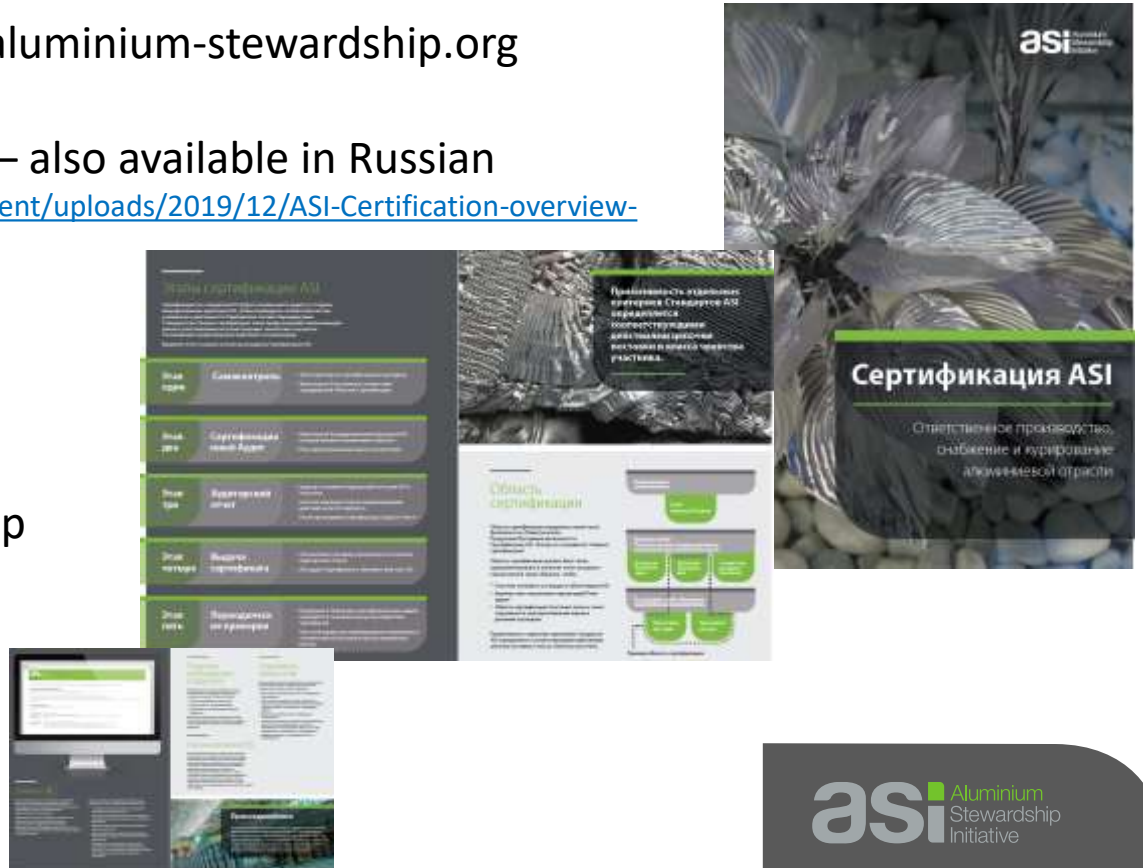
# How to engage with ASI

- ✓ Visit our website – <http://aluminium-stewardship.org>
- ✓ ASI Certification overview – also available in Russian  
[https://aluminium-stewardship.org/wp-content/uploads/2019/12/ASI-Certification-overview-Brochure\\_russian\\_v1.pdf](https://aluminium-stewardship.org/wp-content/uploads/2019/12/ASI-Certification-overview-Brochure_russian_v1.pdf)

- ✓ Sign up to our newsletter

- ✓ Find out about membership

- ✓ Arrange a discussion



# For further information

Cameron Jones

Director of Assurance

[cameron@aluminium-stewardship.org](mailto:cameron@aluminium-stewardship.org)

ASI Website

[www.aluminium-stewardship.org](http://www.aluminium-stewardship.org)

Join the ASI mailing list

<http://aluminium-stewardship.org/mailling-list>

**asi** Aluminium  
Stewardship  
Initiative